



The Shepley Group

Shepley Engineers.

Engineering excellence for seven decades

Frank Shepley created Shepley Engineers in Manchester in 1948, and since then we've been a nuclear stalwart. In late 1948 we were working on the stainless reactors on the Windscale Piles, and was involved in the commissioning of the world's first commercial nuclear power plant, Calder Hall. Over seventy years on, through natural growth and acquisition of our member companies, we're established as a major contractor within several highly-regulated industries.

Sellafield's Longest-Serving Continuous Contractor.

About us.



Shepley Engineers were founded in Manchester on 8th January 1948, and has had a permanent presence at Sellafield since that time. In that very year we were responsible for the installation of stainless ducting systems on the Windscale Reactors, and the early 1950's with the commissioning of the world's first commercial nuclear power station at Calder Hall.

In the early 2000's we went through a growth period and acquired our two wholly owned subsidiaries, PPS Electrical and West Cumberland Engineering, to increase our capability and build one of the largest skilled pool of trade resource in the whole UK nuclear sector.

Our range of service offering means that we are engaged in a number of capacities from main contractor to sub-contractor and in some instances as advisor and consultant. We work individually or in collaboration with complimentary service providers or partners and a significant proportion of our current workload is delivered via long term framework agreements. It has been necessary to develop our processes, systems and culture to be effective and responsive across the full range of these engagement



Our vision

Continue to develop high performing people & strive to build a legacy of excellence within our sectors.

Our group in numbers



Professional Team

242



Tradespeople

399



Enhanced Cleared

52%

**Our values,
vision and
ethos are at
the heart of
what we do.**



Our ethos.

Whether we're working alongside our Group members or operating independently, our culture remains consistent. We put our clients first, supporting their business needs and delivering engineering solutions with commitment, care and consideration. Long term relationships are key to our business model and our people are at the heart of everything we do. Our high performing employees dedicate themselves to delivering customer requirements and we promote an environment that stimulates diversity, innovation, teamwork and continuous improvement.

The strength of our business comes from the wide range of complementary services that we offer. We have core capabilities in Manufacturing and fabrication, mechanical and electrical installation works, E&I panel manufacture, HVAC installation, Decommissioning, decontamination services and specialist restoration & renovation - operating across the United Kingdom.

Our experience of delivering complex projects in some of the UK's most challenging environments is what sets us apart. Delivering safe and sustainable solutions to today's engineering challenges while operating to the highest levels of safety and quality, our dedicated teams can manage integrated solutions from engineering support to manufacturing and installation to commissioning.





The core values of our group »



We are customer focused

Our business model is based on a partnership with our customer to ensure that every interaction is intended to support the customer which in turn assists our business to learn and grow. Our organisation thrives from successful delivery for our customers, we make every decision and measure every outcome based on how well it serves them.



Committed to Right First Time

We have a passion for accuracy and getting it right first time, every time.

Our teams work diligently to implement our proven processes and procedures throughout the lifecycle of a project, and by doing so we believe we provide excellence by all of our people throughout our organisation.



Our people are key to our success

Our employees and the relationships developed over time are the beating heart of Shepley Engineers, this significantly contributes to our ongoing success. We continually develop our employees to enable them to achieve their full potential and have a proven history of internal progression.



We are proactive and adaptable.

Our success stems from the ethos across the business to drive projects and achieve positive outcomes for our customers and partners.

Our agile structure allows us to quickly adapt to situations and respond positively to our customers needs whilst continuously looking for ways to improve what we do.



Our **history.**

1948

Frank Shepley forms Shepley Engineers in Manchester on 8th January 1948



1953

Commissioning begins on the world's first commercial nuclear power station, Calder Hall

1948

Shepley Engineers commence work on the stainless ducting systems in the Windscale Reactors

1985

Shepley complete a major iron restoration project on the Grade I listed Dorchester Hotel in Park Lane, London

1992

Shepley begin work at Springfields, decommissioning Beryllium Laboratories

2002

Shepley Engineers are acquired by parent company Renew Holdings

128 years of engineering excellence

Through both organic growth and acquisition, we have become established as a **major multidisciplined contractor**. We have two wholly owned subsidiaries, **PPS Electrical and West Cumberland Engineering**.



→ Still Growing Strong

2021

Shepley commence work on Diesel Generators at the UK's first nuclear power station in a generation, Hinkley Point C

2009

Shepley begin work as Principle Contractor on the Houses of Parliament iron restoration project.

2006

Acquisition of PPS Electrical

2002

Acquisition of West Cumberland Engineering

2007

Work begins on Evaporator D, the largest nuclear decommissioning project in the UK at the time of construction.

in highly-regulated sectors.

What we do.

Mechanical & Electrical Supply and Installation

Shepley are now established as a major multidisciplined contractor with a large pool of skilled trade resource. We have a very healthy training and development agenda with a large domestic apprenticeship scheme to deal with the future anticipated demands in our sector. We have a vast and proven track record of safe and effective ME&I project delivery across a range of environments and sectors. Shepley have and continue to be associated with many of the UK's major nuclear projects and our group business model provides a self delivery solution including supply, manufacture, installation and commissioning.

Decontamination, Demolition and Decommissioning

Our decontamination, decommissioning and demolition teams offer a unique blend of practical conventional decommissioning experience together with a safe and proven track record involving the introduction of new and innovative technologies where appropriate. This flexible approach to challenging decontamination and decommissioning tasks combined with our proven programme management capabilities provide our various clients with effective and reduced risk solutions. In 2016 we strengthened our decommissioning capability through the addition of Nuclear Decontamination Services Ltd, adding over 30 years' experience in the development and delivery of decontamination solutions. We now offer a full and bespoke service covering every aspect of decontamination requirements, from consultancy to off-site test rig design and build, through to hands on decontamination. We have delivered over 200 decontamination projects, including Sellafield, Magnox and BAE.

Nuclear Operational Support and Asset Care

Working closely with a range of clients across a broad portfolio of nuclear facilities and assets, Shepley have a proven track record for a safe, cost effective and responsive operational support service. Our work in this area includes routine maintenance as well as major outage work and asset enhancement. Our business model has developed so that we are able to self deliver the key disciplines in the areas of Mechanical, Electrical and HVAC as well as minor Building and Civil activity. This has greatly enhanced our flexibility and therefore our ability to respond quickly when operational support becomes a priority.

Specialist Restoration and Renovation

Shepley became established as a specialist restoration and conservation contractor in 1985 when we completed a major iron project on the Grade 1 listed Dorchester Hotel on Park Lane, London. Since that time we have been engaged as the specialist contractor on numerous large high profile restoration schemes as well as a vast array of smaller private commissions. We have made significant investments in the specialist resources which are essential to deal with the unique challenges within this sector and this includes the promotion of trainees through the various key craft skills. We have also made significant investments in our facilities which are capable of dealing with all aspects of the work from the initial cleaning processes, through the various restoration tasks to the application of a range of protective coatings. In all cases our approach is carefully considered to provide a sympathetic solution which can involve a blend of conventional craft skills with technologies which protect the conservation records.

Permit and Conditioning Services

Working in close collaboration with the Sellafield Senior Authorised Person (SL SAP) forum we have extended our existing business offering and developed a comprehensive range of procedures and services that can be adapted to meet any customer requirement. Supporting this adaptive business model we have assembled a dedicated team of highly skilled experienced personnel from Shepley and our subsidiary PPS Electrical with a proven record of delivering this type of service. The service provision proposals we have developed have been well received by both the supply chain and client communities and that has led to the successful award of contracts to provide our services on a number of key projects.

HVAC Services

Shepley HVAC services are dedicated to providing the highest levels of quality and customer service to our clients. Over the last two decades our highly experienced teams have successfully delivered a large number of high profile projects and have established a reputation for being proactive in providing bespoke solutions for the most exacting of HVAC design and installation requirements. We are able to support end to end management of works from the identification of a business requirement through early engagement scoping, sanctioning, design support, completion and testing of an installed system.

Roofing and Cladding

Key members of our personnel have over 30 years' experience in the industrial roofing and cladding industry. Example projects include re-cladding 14,000 m² (designed and installed on the Sellafield Site), 5,500 m² Kalzip over roof & cladding (also designed and installed) and numerous other projects including Sika Decothane projects and profiled sheet refurb/replacement projects. Our dedicated team are approved installers of Kalzip, Sika-Decothane & Rapid systems, Kingspan, EuroClad, Corus, Steadmans and many more.

Accreditations.



ISO 9001

Quality Management



ISO 14001

Quality Management.



BS EN 1090-1

Execution of Steel and Aluminium Structures.



BS EN 1090-2

Execution of Steel and Aluminium Structures.

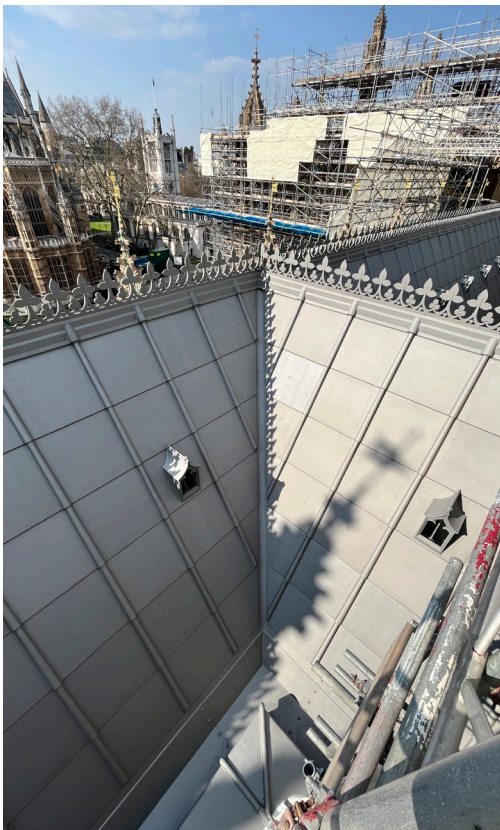
The proof is in the pudding.

Case Studies.

Houses of Parliament Iron Restoration

Shepley Engineers were appointed as Main Contractor on the Houses of Parliament, a Grade 1 listed building and World Heritage Site, for Phase 2 of the Cast Iron Roof Works that followed the successful completion of Phase 1 (also by Shepley) in 2009.

The works consisted of restoring approximately 30,000 cast/ wrought iron components averaging 1m² each, comprised of both structural and non-structural components, all of which have been processed by the Shepley Engineers workshop in Sheffield over the course of 6 years, equating to 5,000 components per year.



More Case Studies?

Read our full case studies online at
www.shepleyengineers.co.uk/case-studies
or scan the QR code



Pile Fuel Cladding Silo.

The Pile Fuel Cladding Silo (PFCS) inside Sellafield is one of the most hazardous buildings in Western Europe, and the oldest legacy storage building on the site. It was commissioned in 1952 to safely store radioactive cladding, without emptying in mind.

However there now comes a time to deliver a system that allows Sellafield to retrieve the waste, remove it safely, and dispose of it for good. The project saw Shepley Engineers remove an existing shear wall and install a new shear wall that connected to the existing building to prevent waste escaping. There was also a requirement to install pre-assembled units, as well as steelwork, rails and bogies that a robotic waste retrieval arm and waste transporters will use to operate remotely, cutting a hole in the silo and moving the waste into storage until it can be finally disposed of.

The new wall installed was over 11 metres tall, and 47 steel plates for the exterior were built at Shepley Group members' West Cumberland Engineering workshop, where it was then galvanized and delivered to site. The holes created lined up precisely to within 1mm, and no holes needed to be re-drilled to complete.

Other Shepley Group members contributed cohesively to the project, with PPS Electrical completing the electrical install, and our HVAC team completing the air conditioning work.

The key challenge on this project was the implications of Covid-19. The lockdown stopped the project completely in March 2020. Upon returning to site, the cabins had to be ripped out to enable the staff to socially distance and work in a safe, practical and confident way. All delivery partners were working collaboratively to find the best approaches to safe working and were sharing LFE's in response to the pandemic.



Case Study

Evaporator D.

| | |
|-----------|----------------|
| Client | Sellafield Ltd |
| Value | £87,000,000 |
| Workforce | 160 |
| Date | 2007 - 2015 |

Overview.

At the time of construction, Evaporator D was the largest nuclear decommissioning project in the UK. It was designed to continue reduction of the volume of highly active legacy waste.

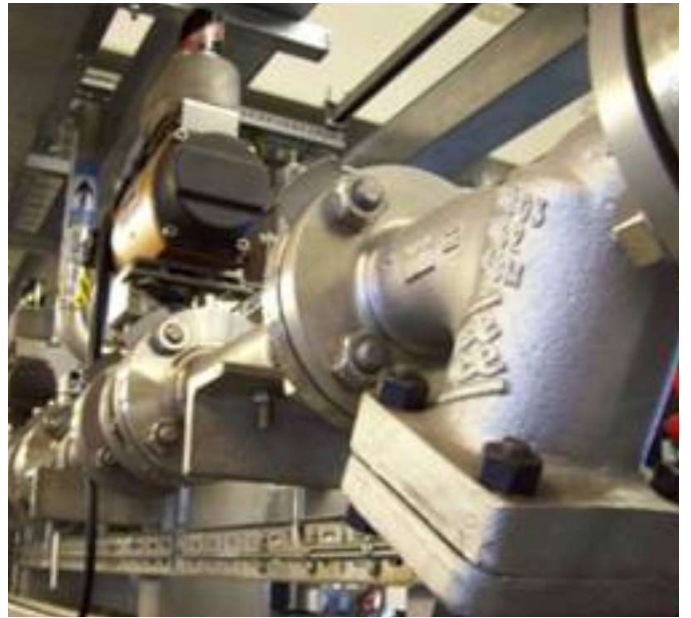
With Evaporator C having outlived its shelf life, Evaporator D was designed to reduce the volume of Sellafield's most radioactive waste product – highly active liquor. The plant is the only evaporator on the site able to process high-level liquid waste created during the clean-out of the Sellafield's reprocessing plants. It reduces the volume of liquor so it can be turned into gas form and safely stored.

Costain were the main contractor who subsequently appointed Shepley Engineers to deliver the Supply, Fabrication, and Mechanical installation work in an Alliance named CS3, which included Costain, Sellafield, and Senior Hargreaves for HVAC works.

Following on from Evaporator C Shepley were responsible for all aspects of Mechanical and Electrical installation work for the entire project. Our scope of service drew upon the complimentary support of the Shepley group companies, including PPS Electrical and West Cumberland Engineering. Fabrication of all pipework, supports and module steelwork was carried out at our West Cumberland Engineering Workington facilities.

The project was located next to a live nuclear operational facility with a restricted footprint which was adjacent to the Sellafield site operational rail network. This meant that a modular build strategy was required, and construction logistics was very restricted with limited access and lay down facilities. This was overcome by using an off-site modular build approach, just in time deliveries and enhanced logistics coordination and cooperation between all subcontractors.

The importance of having a collaborative approach from all stakeholders (Sellafield, Costain, and Shepley Engineers) was demonstrated by the use of a single dedicated project office enabling all project team members to work alongside each other. This approach was critical to minimising cost and schedule impacts associated with delivering a project of this magnitude (clashes, client personnel availability, TQ's etc.). A major contributing factor to reduced cost and schedule impacts was Shepley's impressive quality and safety records. Shepley recorded no safety instances across the 1.2m mechanical man hours worked, resulting in no lost time accidents and minimal site mechanical re-works, which in turn resulted in minimal additional costs and schedule impacts. The Shepley mechanical team achieved a weld repair rate of less than 2% (<220) across 11,000 welds carried out on this project, thus minimising re-work and the cost & schedule impacts associated with it.



Collaboration is **key**.

Our collaborative approach helps us form long-lasting partnerships and successful outcomes. Our ethos across the business is to drive projects and achieve positive outcomes for our customers and partners. Our structure allows us to quickly respond positively to needs whilst continuously looking for ways to improve what we do.

CNSL

Cumbria Nuclear Solutions Ltd is a partnership including six of the most respected organisations in the North-West supply chain – Shepley Engineers, James Fisher Nuclear, REACT Engineering, Jacobs, Westinghouse Electric Company and Tetra Tech. Together we provide a complete range of decommissioning, decontamination, demolition and remediation services with over 100 years of collective experience across the UK nuclear industry in Tier 1, 2 and 3 contractor organisations.



i3

i3 Decommissioning Partners consists of Shepley Engineers, Altrad and Jacobs. We work collaboratively to bring a full range of design and construction services on the DDP contract which has the potential to run over the next 10 years. Our Decommissioning Partners bring over 40 years' continuous service delivery at Sellafield and are working together on the Magnox Swarf Storage Silo (MSSS). We are committed to working collaboratively with Sellafield to establish a sustainable long-term collaborative relationship that delivers against common goals.



NDL

Nuclear Decommissioning Ltd consists of Shepley Engineers, James Fisher Nuclear, REACT Engineering and Tetra Tech. Together as consortium partners, NDL have won multi-million pound decommissioning projects at Dounreay, including High Active Liquor Storage and Evaporation Facility (HALSEF) and Prototype Fast Reactor Facility (PFR).



CMA

Cumbria Manufacturing Alliance is made up of two of the UK's leading Mechanical Engineering companies, Bendalls Engineering and West Cumberland Engineering. The two companies have been working collaboratively for over 20 years on various frameworks, with a combined workspace of around 12,000m² across three sites in Cumbria.



A top-drawer health and safety record.

We are proud of our health, safety, security and environmental performance. Achievements in this area remain the number one corporate objective and this is actively supported from the executive board, down through the entire organisation. We are fully aware of the need for continuous improvement and we actively support ongoing development of our compliance and assurance systems. We have achieved Gold RoSPA awards every year

Sector Award

After winning the Patron's Award, in 2022 Shepley Engineers were awarded the Highly Commended in the Engineering Services Sector Award



Patron's Award

In 2021 Shepley Engineers were awarded a Patron's Award by RoSPA (Royal Society for the Prevention of Accidents), for 25 consecutive RoSPA Gold Awards



Order of Distinction

Shepley Group member PPS Electrical currently boast 22 years consecutive RoSPA Gold Awards



President's Award

Shepley Group member West Cumberland Engineering were awarded a President's Award, following 10 consecutive RoSPA Gold Awards





**Doing our bit
environmentally
and socially.**

We strive to make a difference.

We're committed to serving the communities in which our employees live and work, and bridge the gap between the most affluent and vulnerable people in those areas.

Our Social Impact Strategy sets out how we plan to do this, and continue to help improve the local communities we work in. From a strong and successful apprenticeship programme to our Net-Zero pledge, the strategy works toward our overarching mission: **deliver high performing people and build a legacy of excellence.**

Environmental in numbers

EV Chargers
8

EV Fleet vehicles
1

Renewable tariffs
78%

Landfill diversion
99%

Social impact in numbers

Hours volunteering
8,499

Grant Donations
£11,000

Individual donations
£2,250

Initiatives supported
22

Get in touch.



The Shepley Group

Shepley Engineers Ltd

Old Town Hall, Duke Street,
Whitehaven, CA28 7NU

Tel: 01946 599022

Email: engineers@shepley.org.uk

www.shepleyengineers.co.uk

 @ShepleysUK

 Shepley Group

 Shepley Engineers Ltd